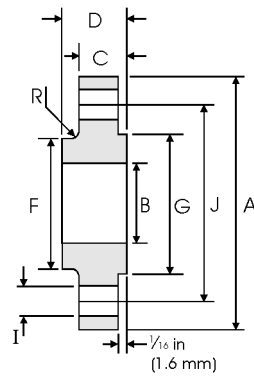


Weld Neck



Slip On

Class 150 lb

Pipe Nominal Pipe Size	Flange Data				Hub Data		Raised Face	Drilling Data			Radius	Weight	
	A	B	C	D		E	F	G	H	I	J	R	
	Overall Diameter	Slip on Inside Diameter	Flange Thickness	WNF Overall Length	Slip on Overall Length	WNF Diameter at Weld Bevel	WNF / Slip on Hub Diameter	Face Diameter	Number of Holes	Bolt Hole Diam.	Diameter of Circle of Holes	Fillet	kg/ piece
in mm	in mm	in mm	in mm	in mm	in mm	in mm	in mm	in mm		in mm	in mm	in mm	WNF Slip On
26	34 1/4 869.9	26 1/4 666.7	2 50.8	5 127.0	3 3/8 85.7	26 660.4	28 1/2 723.9	29 1/4 742.9	24	1 3/8 34.9	31 3/4 806.4	1 3/4 6.35	118 107
28	36 1/2 927.1	28 1/4 717.6	2 1/16 52.4	5 1/16 128.6	3 7/16 87.3	28 711.2	30 3/4 781.0	31 1/4 793.7	28	1 3/8 34.9	34 863.6	1 1/4 6.35	134 122
30	38 3/4 984.2	30 1/4 768.3	2 1/8 54.0	5 1/8 130.2	3 1/2 88.9	30 762.0	32 3/4 831.8	33 3/4 857.2	28	1 3/8 34.9	36 914.4	1 1/4 6.35	153 138
32	41 3/4 1060.4	32 1/4 819.1	2 1/4 57.1	5 1/4 133.3	3 5/8 92.1	32 812.8	35 889.0	35 3/4 908.0	28	1 5/8 41.3	38 1/2 977.9	5/16 7.94	190 170
34	43 3/4 1111.2	34 1/4 869.9	2 5/16 58.7	5 5/16 134.9	3 11/16 93.7	34 863.6	37 939.8	37 3/4 958.8	32	1 5/8 41.3	40 1/2 1028.7	5/16 7.94	212 184
36	46 1168.4	36 1/4 920.7	2 3/8 60.3	5 3/8 136.5	3 3/4 95.2	36 914.4	39 1/4 996.9	40 1/4 1022.3	32	1 5/8 41.3	42 3/4 1085.8	5/16 7.94	242 211
38	48 3/4 1238.2	38 1/4 971.5	2 3/8 60.3	5 3/8 136.5	3 3/4 95.2	38 965.2	41 3/4 1060.4	42 1/4 1073.1	32	1 5/8 41.3	45 1/4 1149.3	3/8 9.53	284 249
40	50 3/4 1289.0	40 1/4 1022.3	2 1/2 63.5	5 1/2 139.7	3 7/8 98.4	40 1016.0	43 3/4 1111.2	44 1/4 1123.9	36	1 5/8 41.3	47 1/4 1200.1	3/8 9.53	311 272
42	53 1346.2	42 1/4 1073.2	2 5/8 66.7	5 5/8 142.9	4 101.6	42 1066.8	46 1168.4	47 1193.8	36	1 5/8 41.3	49 1/2 1257.3	3/8 9.53	358 313
44	55 1/4 1403.3	44 1/4 1123.9	2 5/8 66.7	5 5/8 142.9	4 101.6	44 1117.6	48 1219.2	49 1244.6	40	1 5/8 41.3	51 3/4 1314.4	7/16 11.11	376 331
46	57 1/4 1454.2	46 1/4 1174.7	2 11/16 68.3	5 11/16 144.5	4 1/16 103.2	46 1168.4	50 1270.0	51 1295.4	40	1 5/8 41.3	53 3/4 1365.2	7/16 11.11	399 349
48	59 1/2 1511.1	48 1/4 1225.5	2 3/4 69.9	5 3/4 146.1	4 1/8 104.8	48 1219.2	52 1/4 1327.2	53 1/2 1358.9	44	1 5/8 41.3	56 1422.4	7/16 11.11	440 381

Notes

- For weld neck flanges, dimension B is to be specified by the purchaser. It corresponds to the pipe inside diameter.
- For slip on flanges, the hub may be cylindrical or have a draft of ≤ 7° on the outside surface.
- WNF = Weld Neck Flange.
- Weights are based on manufacturer's data and are approximate.