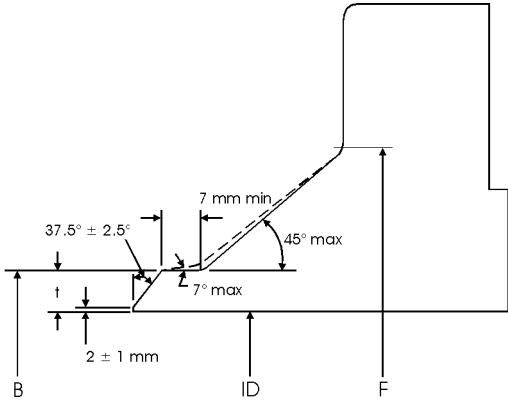
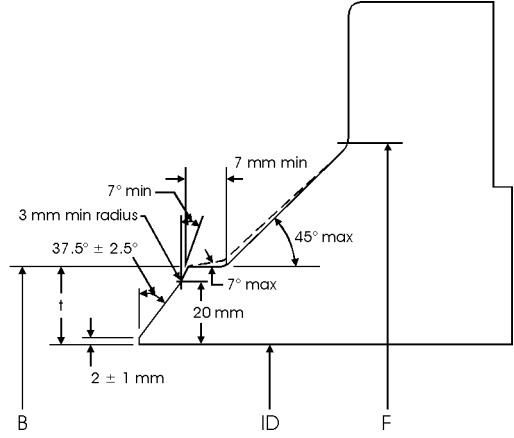


## Weld Neck Flange - Welding Ends



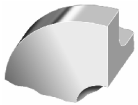
Welding end for Wall Thickness (t) from 5 mm to 22.2 mm



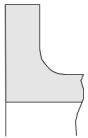
Welding end for Wall Thickness (t) > 22.2 mm

## Flange Facings - BS 4504

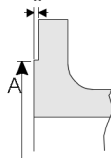
BS 4504 flange facing types A to H are defined below. The dimensions vary with pipe size (DN) and pressure rating (PN) as detailed in the following table.



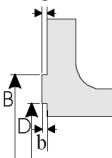
Type A  
Flat face



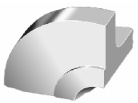
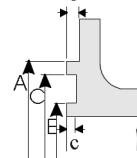
Type B  
Raised face



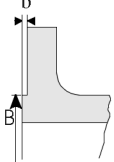
Type C  
Tongue face



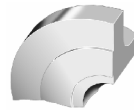
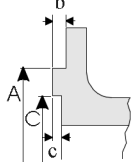
Type D  
Groove face



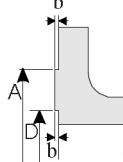
Type E  
Spigot



Type F  
Recess



Type G  
'O' Ring recess



Type H  
'O' Ring groove

