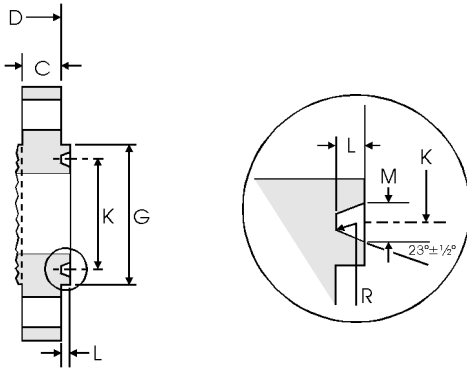


Ring Joint Facings - ASME/ANSI B16.5 & B16.47



Note

- Values for minimum flange thickness, C, and overall length, D, are detailed in the flange tables.
- For ring joint tolerances see page 8-9.

Ring joint facing dimensions - ASME/ANSI B16.5 and B16.47 Series A (MSS SP-44) and Series B (API 605)

Class (lb)						Groove/Ring Number	Raised Face	Groove				
150	300	400	600	900	1500		2500	G	K	L	M	R
Nominal Pipe Size (NPS)							Face Diameter min	Pitch Diameter	Depth ¹	Width	Radius at Bottom	
							in mm	in mm	in mm	in mm	in mm	
ASME/ANSI B16.5 covers NPS 1/2 to 24:												
	1/2	Use Class 600 for sizes ≤ 3 1/2	1/2	Use Class 1500 for sizes ≤ 2 1/2		R11	2.000 50.80	1.344 34.14	0.219 5.56	0.281 7.14	0.03 0.76	
					1/2	R12	2.380 60.45	1.562 39.67	0.250 6.35	0.344 8.74	0.03 0.76	
	3/4				3/4	R13	2.500 63.50	1.688 42.88	0.250 6.35	0.344 8.74	0.03 0.76	
					1/2	R13	2.560 65.02	1.688 42.88	0.250 6.35	0.344 8.74	0.03 0.76	
					3/4	R14	2.620 66.55	1.750 44.45	0.250 6.35	0.344 8.74	0.03 0.76	
1						R15	2.500 63.50	1.875 47.63	0.250 6.35	0.344 8.74	0.03 0.76	
	1				1	R16	2.750 69.85	2.000 50.80	0.250 6.35	0.344 8.74	0.03 0.76	
					1	R16	2.810 71.37	2.000 50.80	0.250 6.35	0.344 8.74	0.03 0.76	
					3/4	R16	2.880 73.15	2.000 50.80	0.250 6.35	0.344 8.74	0.03 0.76	
	1 1/4					R17	2.880 73.15	2.250 57.15	0.250 6.35	0.344 8.74	0.03 0.76	
			1 1/4	R18	3.120 79.25	2.375 60.33	0.250 6.35	0.344 8.74	0.03 0.76			
			1 1/4	R18	3.190 81.03	2.375 60.33	0.250 6.35	0.344 8.74	0.03 0.76			
			1	R18	3.250 82.55	2.375 60.33	0.250 6.35	0.344 8.74	0.03 0.76			
	1 1/2			R19	3.250 82.55	2.562 65.07	0.250 6.35	0.344 8.74	0.03 0.76			
			1 1/2	R20	3.560 90.42	2.688 68.28	0.250 6.35	0.344 8.74	0.03 0.76			
			1 1/2	R20	3.620 91.95	2.688 68.28	0.250 6.35	0.344 8.74	0.03 0.76			
			1 1/4	R21	4.000 101.60	2.844 72.24	0.312 7.92	0.469 11.91	0.03 0.76			
				R22	4.000 101.60	3.250 82.55	0.250 6.35	0.344 8.74	0.03 0.76			
				R23	4.250 107.95	3.250 82.55	0.312 7.92	0.469 11.91	0.03 0.76			
			1 1/2	R23	4.500 114.30	3.250 82.55	0.312 7.92	0.469 11.91	0.03 0.76			
			2	R24	4.880 123.95	3.750 95.25	0.312 7.92	0.469 11.91	0.03 0.76			
	2 1/2			R25	4.750 120.65	4.000 101.60	0.250 6.35	0.344 8.74	0.03 0.76			
			2 1/2	R26	5.000 127.00	4.000 101.60	0.312 7.92	0.469 11.91	0.03 0.76			
			2	R26	5.250 133.35	4.000 101.60	0.312 7.92	0.469 11.91	0.03 0.76			

This is trial version

www.adultpdf.com