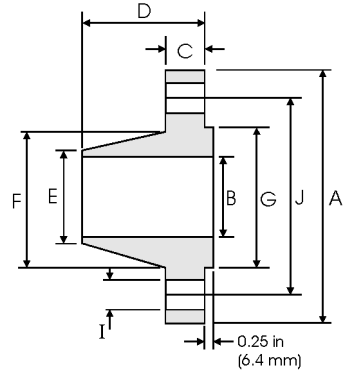


# Weld Neck Flanges - ANSI B16.5 Class 600lbs



Pipe		Flange Data				Hub Data		Raised Face	Drilling Data			Weight
Nominal Pipe Size		<b>A</b>	<b>B</b>	<b>C</b>	<b>D</b>	<b>E</b>	<b>F</b>	<b>G</b>	<b>H</b>	<b>I</b>	<b>J</b>	
	Outside Diameter	Overall Diameter	Inside Diameter	Flange Thickness min	Overall Length	Diameter at Weld Bevel	Hub Diameter	Face Diameter	Number of Holes	Bolt Hole Diameter	Diameter of Circle of Holes	kg/ piece
	in mm	in mm	in mm	in mm	in mm	in mm	in mm	in mm		in mm	in mm	
1/2	0.840	3.750	To be specified by Purchaser	0.560	2.060	0.840	1.500	1.380	4	0.620	2.620	0.87
	21.30	95.30		14.20	52.30	21.30	38.10	35.00		15.70	66.55	
3/4	1.050	4.620		0.620	2.250	1.050	1.880	1.690	4	0.750	3.250	1.45
	26.70	117.3		15.70	57.15	26.70	47.80	42.90		19.10	82.60	
1	1.315	4.880		0.690	2.440	1.320	2.120	2.000	4	0.750	3.500	1.76
	33.40	124.0		17.50	62.00	33.50	53.80	50.80		19.10	88.90	
1 1/4	1.660	5.250		0.810	2.620	1.660	2.500	2.500	4	0.750	3.880	2.49
	42.20	133.4		20.60	66.55	42.20	63.50	63.50		19.10	98.60	
1 1/2	1.900	6.120		0.880	2.750	1.900	2.750	2.880	4	0.880	4.500	3.49
	48.30	155.4		22.40	69.85	48.30	69.85	73.15		22.40	114.3	
2	2.375	6.500		1.000	2.880	2.380	3.310	3.620	8	0.750	5.000	4.36
	60.30	165.1		25.40	73.15	60.45	84.10	91.90		19.10	127.0	
2 1/2	2.875	7.500		1.120	3.120	2.880	3.940	4.120	8	0.880	5.880	6.43
	73.00	190.5		28.40	79.25	73.15	100.1	104.6		22.40	149.4	
3	3.500	8.250		1.250	3.250	3.500	4.620	5.000	8	0.880	6.620	8.53
	88.90	209.6		31.75	82.60	88.90	117.3	127.0		22.40	168.1	
3 1/2	4.000	9.000		1.380	3.380	4.000	5.250	5.500	8	1.000	7.250	10.7
	101.6	228.6		35.10	85.90	101.6	133.4	139.7		25.40	184.2	
4	4.500	10.75		1.500	4.000	4.500	6.000	6.190	8	1.000	8.500	17.4
	114.3	273.1		38.10	101.6	114.3	152.4	157.2		25.40	215.9	
5	5.563	13.00	1.750	4.500	5.560	7.440	7.310	8	1.120	10.50	29.2	
	141.3	330.2	44.50	114.3	141.2	189.0	185.7		28.40	266.7		
6	6.625	14.00	1.880	4.620	6.630	8.750	8.500	12	1.120	11.50	34.9	
	168.3	355.6	47.80	117.3	168.4	222.3	215.9		28.40	292.1		
8	8.625	16.50	2.190	5.250	8.630	10.75	10.62	12	1.250	13.75	53.9	
	219.1	419.1	55.60	133.4	219.2	273.1	269.7		31.75	349.3		
10	10.75	20.00	2.500	6.000	10.75	13.50	12.75	16	1.380	17.00	86.5	
	273.0	508.0	63.50	152.4	273.0	342.9	323.8		35.10	431.8		
12	12.75	22.00	2.620	6.120	12.75	15.75	15.00	20	1.380	19.25	103	
	323.8	558.8	66.55	155.4	323.8	400.1	381.0		35.10	489.0		
14	14.00	23.75	2.750	6.500	14.00	17.00	16.25	20	1.500	20.75	122	
	355.6	603.3	69.85	165.1	355.6	431.8	412.7		38.10	527.1		
16	16.00	27.00	3.000	7.000	16.00	19.50	18.50	20	1.620	23.75	170	
	406.4	685.8	76.20	177.8	406.4	495.3	469.9		41.10	603.3		
18	18.00	29.25	3.250	7.250	18.00	21.50	21.00	20	1.750	25.75	204	
	457.2	743.0	82.60	184.2	457.2	546.1	533.4		44.50	654.1		
20	20.00	32.00	3.500	7.500	20.00	24.00	23.00	24	1.750	28.50	254	
	508.0	812.8	88.90	190.5	508.0	609.6	584.2		44.50	723.9		
24	24.00	37.00	4.000	8.000	24.00	28.25	27.25	24	2.000	33.00	358	
	609.6	939.8	101.6	203.2	609.6	717.6	692.1		50.80	838.2		

**Notes**

- Dimension B corresponds to the pipe inside diameter. Values quoted assume 40S/Standard wall thickness.
- Weights are based on manufacturer's data and are approximate.